



Version 1



Version 2

MATERIALS

Caron® Simply Soft® Party™ (3 oz/85 g; 164 yds/150 m)

Version 1 Spring Sparkle (PAR0003)

6 balls

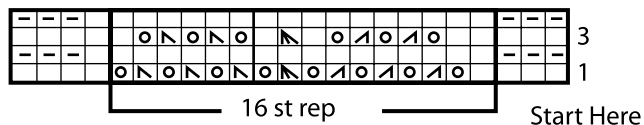
Version 2 Teal Sparkle (PAR0004)

6 balls

Size U.S. 8 (5 mm) knitting needles **or size needed to obtain gauge.**

KEY

- = Knit on RS rows. Purl on WS rows.
- = Purl on RS row. Knit on WS rows.
- = yo
- = ssk
- = K2tog
- = Center decrease



ABBREVIATIONS:

Approx = Approximate(ly)

Center dec (worked over 3 sts) = slip next 2 sts as if to K2tog, K1, then pass slipped sts over knit st – center of 3 sts should be on top of decrease (2 sts have been decreased).

Cont = Continue

K = Knit

K2tog = Knit next 2 stitches together

Pat = Pattern

Rep = Repeat

Ssk = Slip next 2 stitches knitwise one at a time. Pass them back onto left-hand needle, then knit through back loops together.

St(s) = Stitch(es)

Tog = Together

WS = Wrong side

Yo = Yarn over

KNIT | SKILL LEVEL: EASY

MEASUREMENTS

Approx 21" x 54" [53.5 cm x 137 cm] (excluding fringe).

GAUGE

18 sts and 24 rows = 4" [10 cm] in stocking stitch.

INSTRUCTIONS

Cast on 87 sts.

Knit 3 rows (garter st), noting first row is WS.

1st row: (RS). K3. *K1. (yo. K2tog) 3 times. yo. Center dec. yo. (ssk. yo) 3 times. Rep from * to last 4 sts. K4.

2nd row: K3. Purl to last 3 sts. K3.

3rd row: K3. *K2. (yo. K2tog) twice. yo. K1. Center dec. K1. (yo. ssk) twice. yo. K1. Rep from * to last 4 sts. K4.

4th row: As 2nd row. These 4 rows form pat.

Cont in pat until work from beg measures approx 53½" [136 cm], ending with a 3rd row. Knit 3 rows (garter st). Cast off.

Fringe: Cut lengths of yarn 20" [51 cm] long. Taking 3 strands tog, fold in half and knot into fringe having 11 knots across each end of Shawl. Trim fringe evenly.

